



222 Metro Center Blvd., Warwick, RI



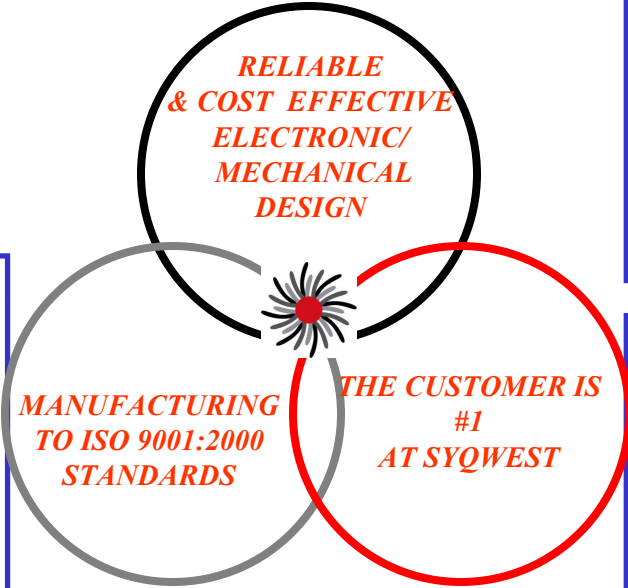
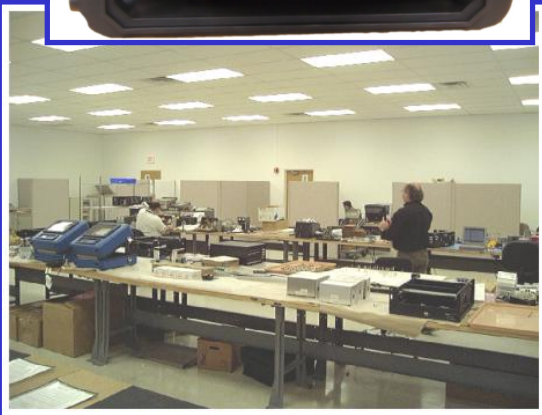
- Innovative Solutions for a Global Market -

Voice: (401) 921 5170 FAX (401) 921 5159 | www.syqwestinc.com | sales@syqwestinc.com

Well Balanced Capabilities



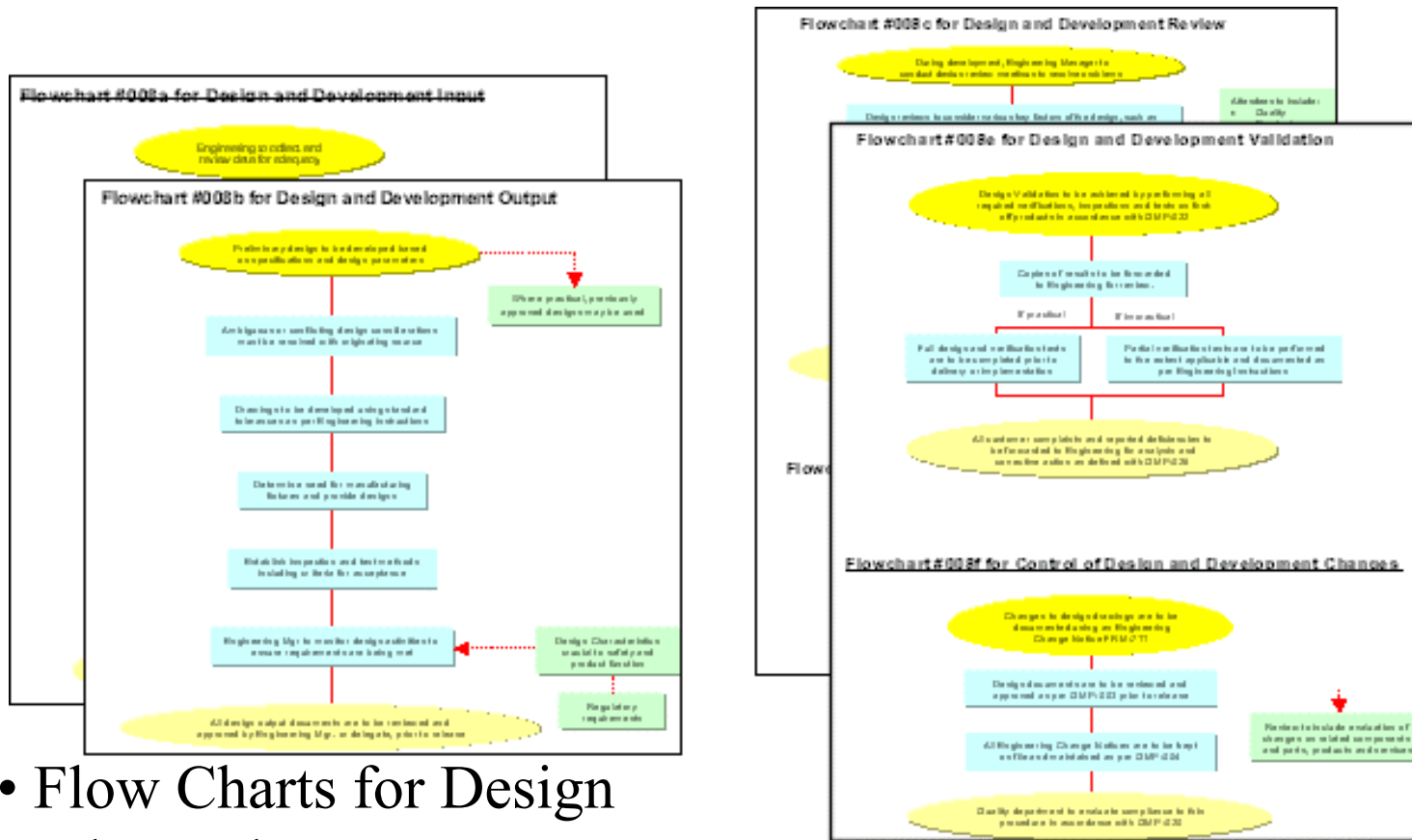
SyQwest Incorporated has over 30 years experience in the design, manufacturing and technical support of high quality, Data acquisition and tactical equipment for the military and scientific communities .



Established Design Process



- SyQwest's Design Methodology complies with ISO 9001: 2000 Standards

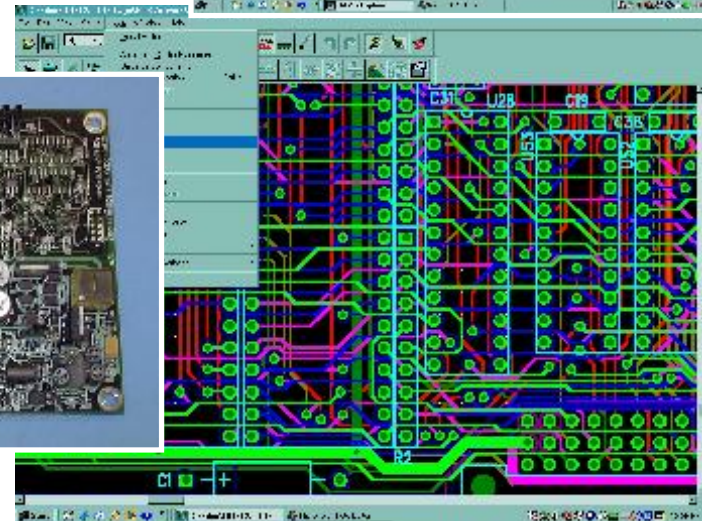
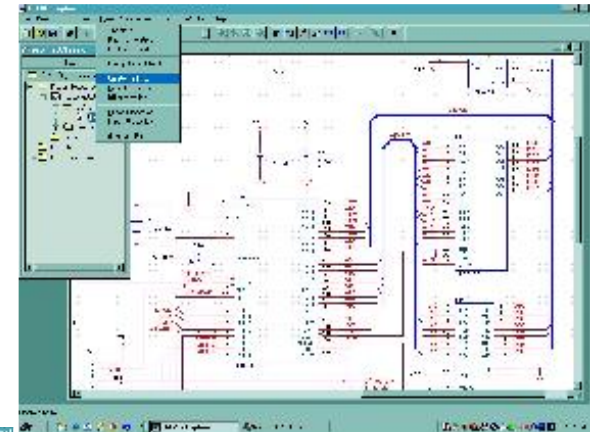


- Flow Charts for Design and Development

Electronic Hardware Design



- **Circuit and System Level Design using proven Development Tools**
 - Schematic Capture
 - PCB Layout
 - Design Simulation & Verification
- **Design Experience in Through-hole and Surface Mount Technologies**



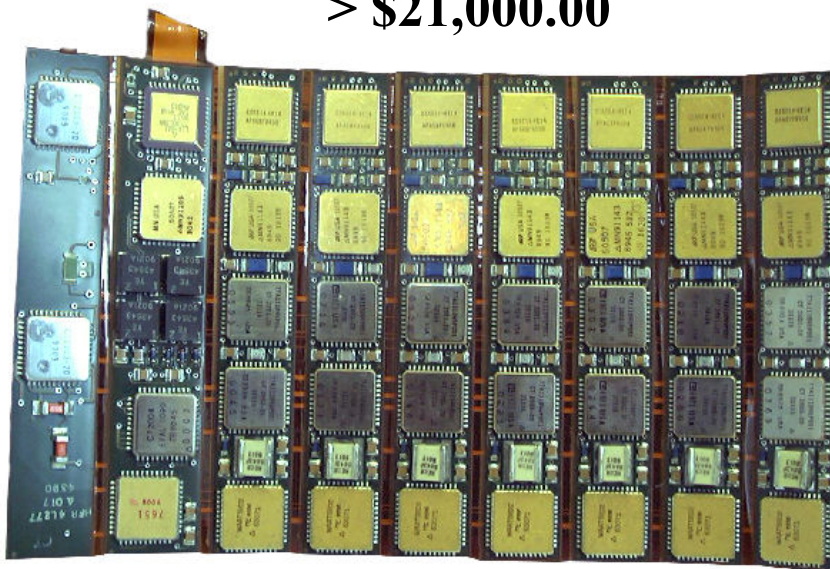
Electronic Design Example



- **Wide Aperture Array (WAA) OBE**
 - **Redesign of WAA Electronics**
 - **For all Navy Attack Submarines**
 - **> 400 In Use**

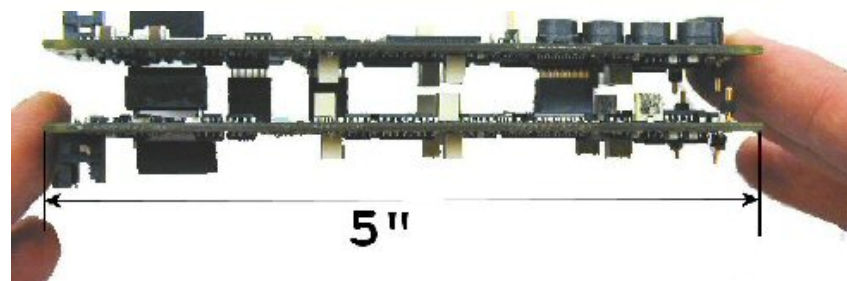
ORIGINAL DESIGN

> \$21,000.00



UPDATED DESIGN

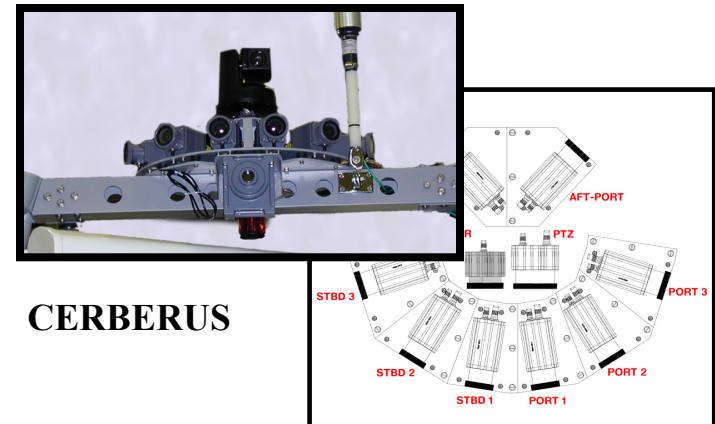
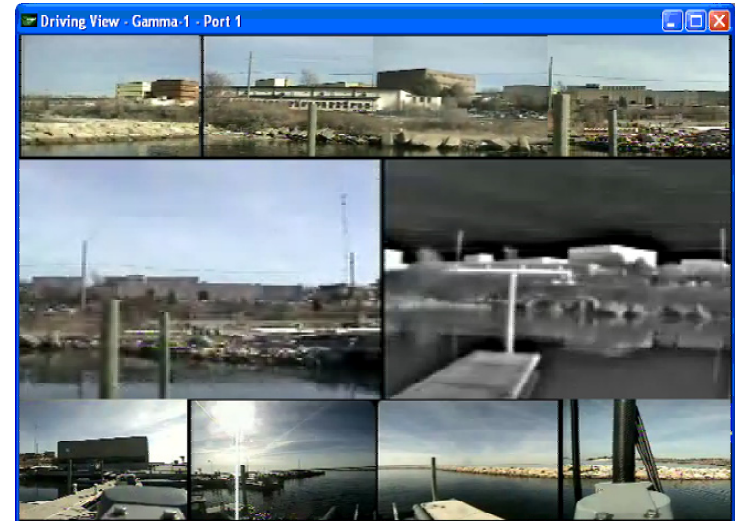
\$6,500.00



Software Design Example



- **CERBERUS 360° VISION SYSTEM**
 - Developed for NUWC, Newport, RI
 - Used for Unmanned Surface Vehicle on SPARTAN Project
 - SyQwest developed Windows XP Application for User Display and Control of 10 Camera Vision System (including PTZ and IR Camera's).
 - The application interfaced to the 10 camera's via a wireless network connection.
 - H.264 Video encoding was used to minimize bandwidth usage.
 - Software provides means to seam views from front and rear of vessel for seamless panoramic view at multiple Zoom factors.
 - PTZ Control based on Intuitive User based Mouse Cursor movements.



CERBERUS

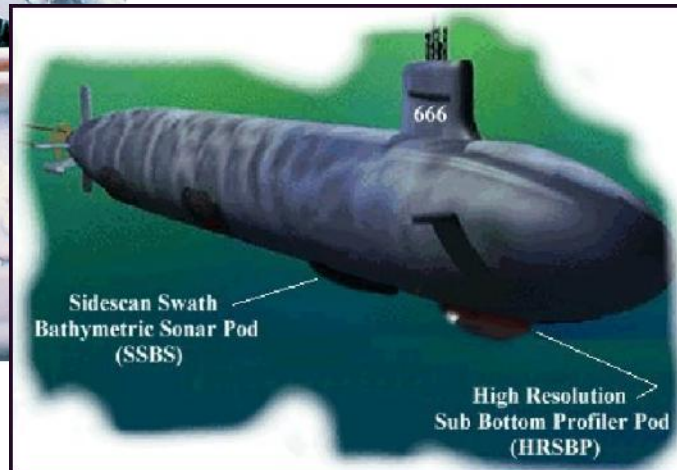
Rugged Mechanical Design



- SyQwest has multiple systems installed on the US Coast Guard's ice breakers, both inboard and hull mounted.



- From polar regions to undersea, SyQwest performs.

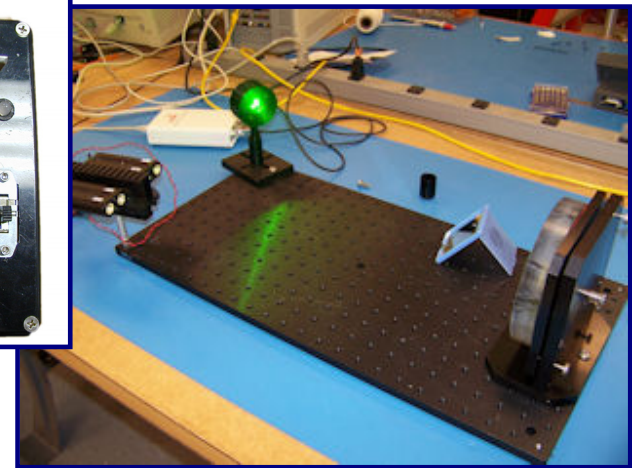
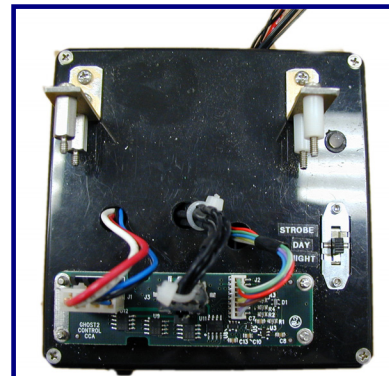
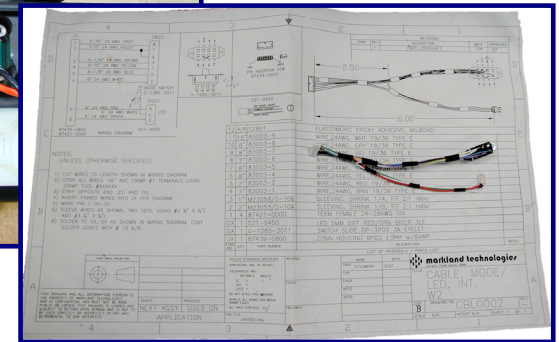
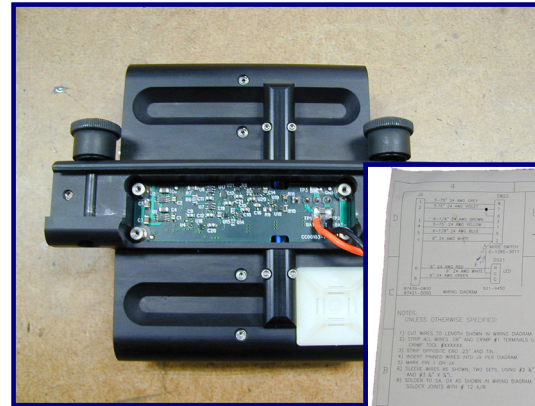


- USS Hawkbill, SSN 666, SCICEX 98 & 99: BATHY 2000P precision sub-bottom survey system performed exceptionally well, operating continuously throughout the science programs.

Product Manufacturing



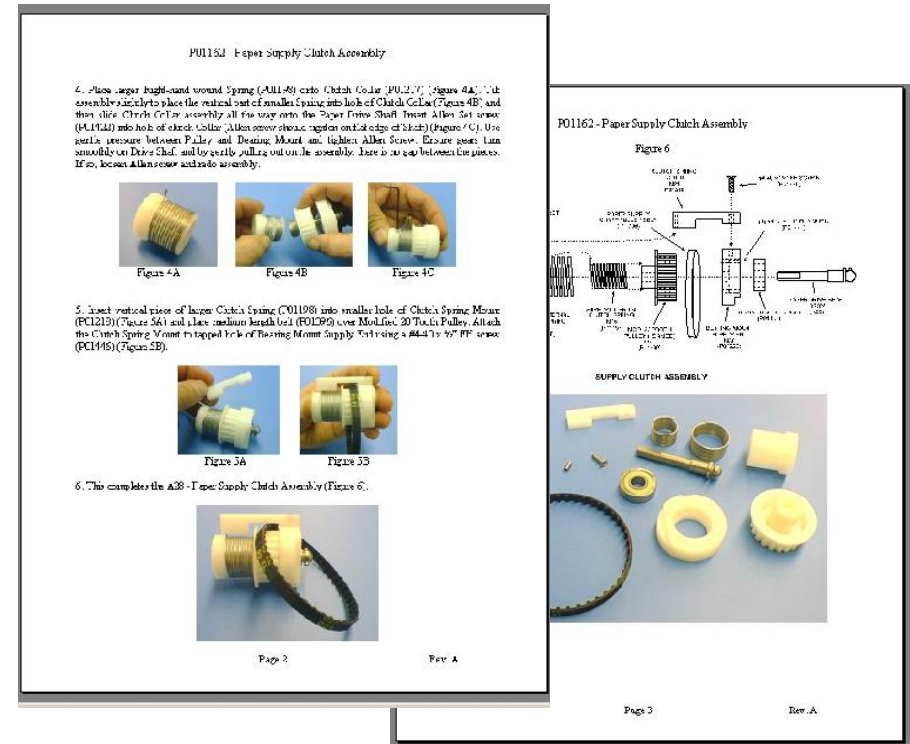
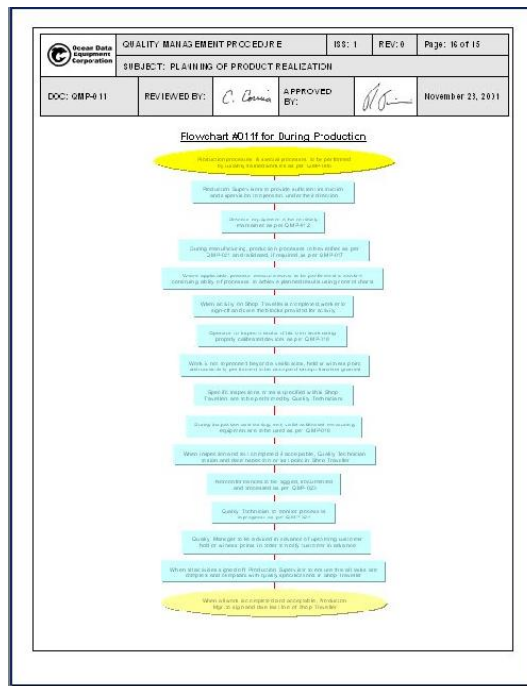
- Product Assembly
 - Mechanical
 - Printed Circuit Boards
 - Cable and Harness
- Product Test
 - Sub-assembly test
 - Final product test



Manufacturing Process Control



- Manufacturing Process Control is ISO 9001:2000 Compliant



- Flow Charts establish the manufacturing processes.

- Validated Process Instructions control each manufacturing step.

Manufacturing Excellence



- AN/WQC-2A Inboard Electronics
- Manufactured for US Navy for use in DDG-51 class ships
- Inspected and Tested to Military requirements: ANSI/J-STD-001C, IPC-A-610C, MIL-STD-2073
- > 20 systems delivered

- Enteral feeding pumps for commercial sale.
- Manufactured for domestic medical use.
- Designed, Manufactured and Inspected to stringent FDA requirements.
- > 5000 pumps delivered



Customer Communications



- SyQwest Provides Installation Support, On-Site Training and Field Service.
- Frequent Communication With Users
- Customer Needs Are Sought Out
- Prompt Feed-Back to Engineering and Manufacturing for Refinements and Improvements



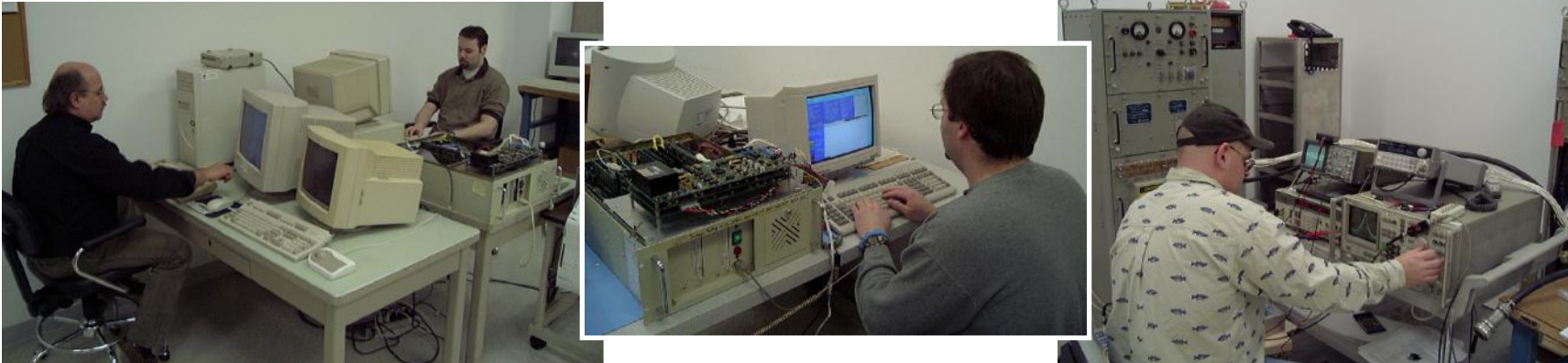
Focus on Personnel



SyQwest's greatest asset is our dedicated, experienced personnel.



Engineering



- CAD Design Tools for electrical and mechanical design (Orcad, PADS, AutoCad, SolidWorks)
- Software Development (MS Visual C++, TI Code Composer)
- Modern test equipment (Laser Energy Measurement, Spectrum Analyzer, Logic Analyzer, Noise Meter, Frequency Synthesizer).

Manufacturing



- ISO Certified Manufacturing Area
- Receiving/Shipping, Stockroom and Palletized Storage
- 10,000 Sq. Ft. - Total Facility



Summary



-
- Quality Design, Manufacturing, and Support.
 - ISO-9001:2000 Qualified (2006).
 - A Small Business with strong customer commitment.
 - Engineering designs field proven for military and scientific applications.
 - Cost Effective, Superior Manufacturing of both small lot, complex assemblies and high quantity, precision products.